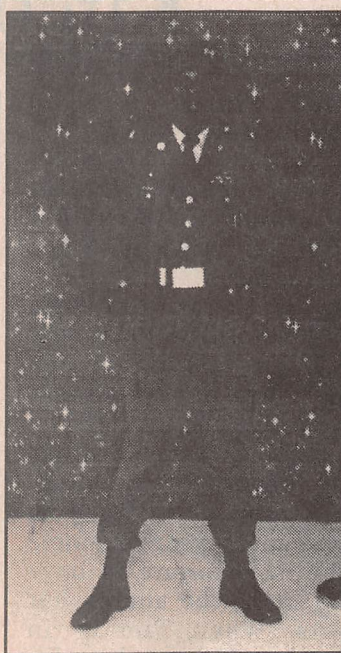


DEPENDENT, Winnsboro, S.C.

**A LITTLE AD GOES  
A LONG, LONG WAY**



*In memory of*  
**Keith Bernard Evans**

Oct. 18, 1970

Feb. 8, 1996

*I cannot say, and I will not say  
That he is dead. He is just away  
With a cheery smile  
and a wave of the hand*

*He has wandered into an unknown land  
And left us dreaming how very fair  
It needs must be, since he lingers there  
And you - oh you, who the wildest year  
For an old-time step, and the glad return*

*Think of him faring on, as dear  
In the love of There as the love of Here  
Think of him still as the same. I say,  
He is not dead... he is just away.*

*~ James Whitcomb Riley*

*With Everlasting love,*  
Shirley B. Evans - Mother  
Lakeisha - Daughter  
Audrey, Timothy  
& Amos Jr. - Sister/Brothers